



Connector
Panels



Cables



Control
Equipment



System
Electronics

Product information EIB-IR

EIB-IR – Basic Information



- Device control via EIB/KNX
- Control up to 4 IR devices
- Integrated Infrared learning system
- Control up to 2 RS232 devices
- 4 Digital Outputs to manage screens or similar devices
- Macros for timing based functions
- Timing management for every command
- Programming style close to ETS3



Control equipment

EIB/KNX

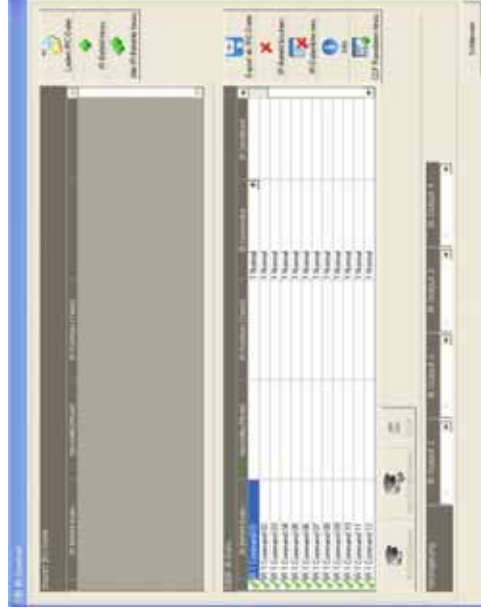


- Can be embedded in every EIB/KNX project
- Programming style close to ETS3
- Free definition of EIB/KNX addresses
- Clearly arranged EIB/KNX address list for project documentation



Control equipment

Infrared



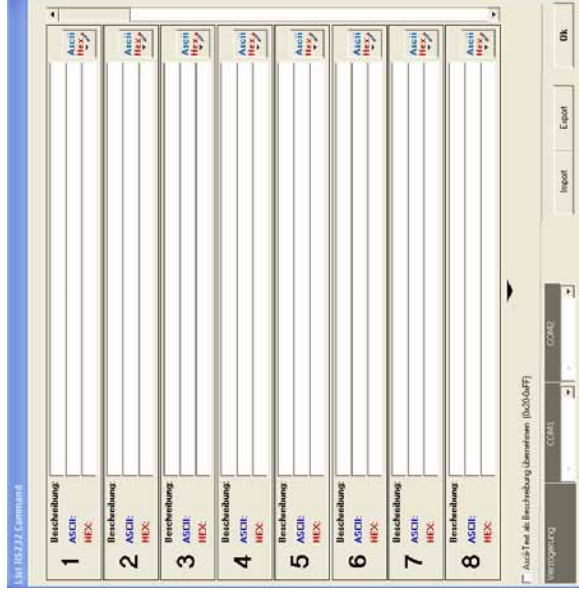
- Integrated IR learning system
- 4 IR outputs
- 96 IR-codes with independent output allocation
- Command import from other projects or drivers
- Adjustable individual command delay for every IR port
- Additional adjustable individual command delay for every IR command



Control equipment

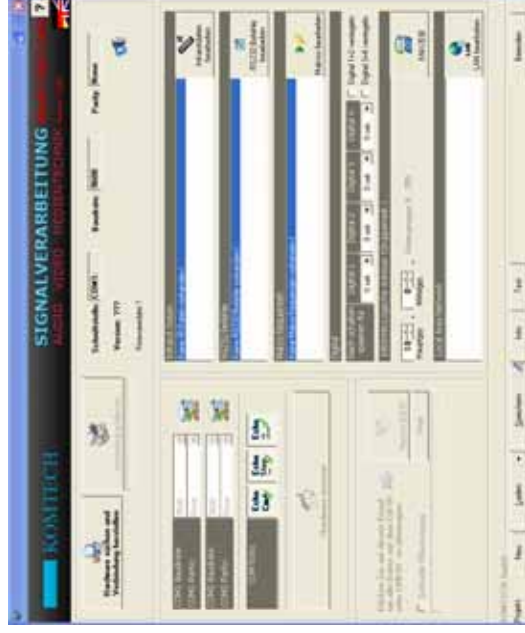
RS232

- 2x RS232 outputs
- Baud rates: 4800 – 38400 Baud
- Command input via HEX and ASCII
- Command import from other projects
- 48 commands with independent output allocation
- Adjustable individual command delay for every RS232 port
- Additional adjustable individual command delay for every RS232 command
- Simple command structure to control an EIB-IR module by RS232



Control equipment

Digital Out

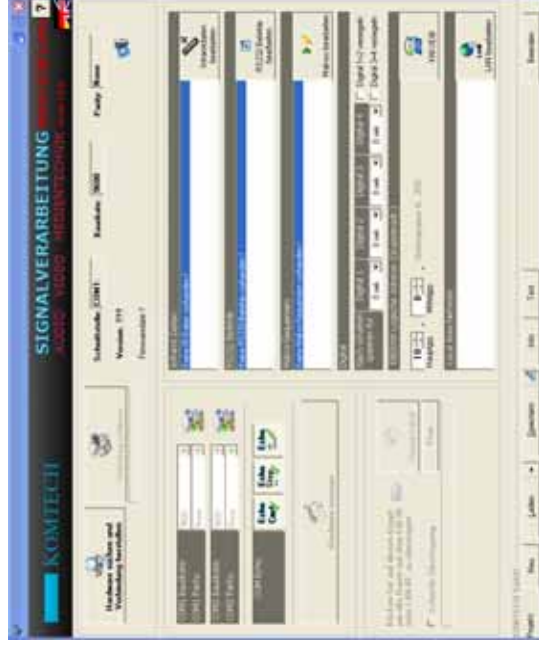


- 4x Digital Out (DO)
- 4x single or 2 pairs
- Each pair can be interlocked vice versa
- Free to define blocking-period per DO



Control equipment

Software WinIR



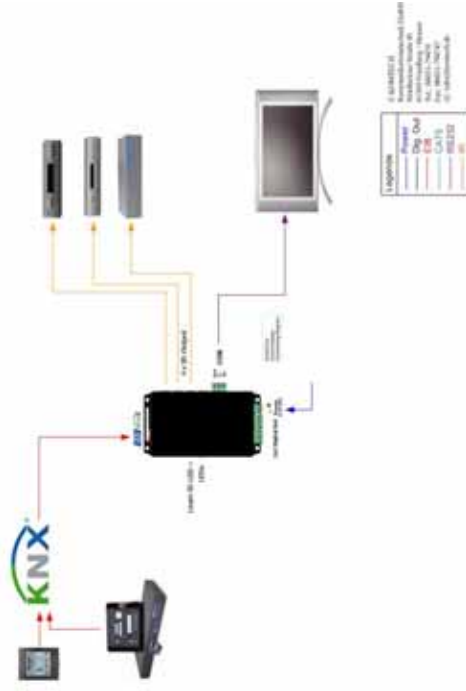
- Configure your EIB-IR module via RS232
- Set up EIB/KNX address group
- Configuration of the port setups for Digital Outputs, IR and RS232
- Setting COM Echo
- Adjustable Command echo to EIB/KNX (When controlled via RS232)
- Adjustable Command echo to RS232 (When controlled via EIB/KNX)



Control equipment

Example 1: Multimedia control via EIB/KNX

- A LCD Monitor controlled via RS232
- An A/V Switcher, Blu-Ray Player and a Hard disk receiver controlled via IR
- Commands are activated via an EIB/KNX keypad and a media room control system (optional, also used for other functions) .



Control equipment

Example 2: Conference room

- Control a Projektor via RS232
- An A/V Switcher, Blu-Ray Player and a Hard disk receiver controlled via IR
- Control a screen and a ceiling lift via DO
- Commands are activated via an EIB/KNX keypad.
- There are two additional macros implemented in the system which set up the room in presentation mode and sleeping mode. The modes are started via a button on the keypad.



Control equipment



Why choose EIB-IR in your project?

- **Integrated** EIB/KNX connection
- **Easy to configure** interface between EIB/KNX and media
- **Integrated IR-Learning system**
- **Control 4 IR** , **2 RS232** and **4 DO** output ports via EIB/KNX
- **Timing Management** for every command and port
- **Macros** für timing controlled setups
- **Short** line of support



Control equipment



Contact:

KOMTECH GmbH

+49(0)6031-79470

info@komtech.de

www.komtech.de